

Table of Contents

Product Line

Board to Board Connectors / HDMI™	pg. 1
D-Subminiature Connectors	pg. 2
USB / IEEE 1394	pg. 3
Modular Jacks	pg. 4
Optical / DC Power	pg. 5
3.5mm Audio Jacks	pg. 6
2.5mm Audio Jacks	pg. 7
Mini Dins / Card Edge	pg. 8
Cables	pg. 9

Kycon, Inc. began operations in 1988 with the goal of supplying cost effective interconnect solutions of the highest quality and with the best delivery record in the industry.

The company operates from its headquarters in San Jose, California, with sales representatives and distributors throughout North America, Europe and Asia.

Kycon thanks all of our customer base for their recognition of our dedication to excellence. As a result, for the third year in a row, Kycon was awarded the #2 position on the Bishop Annual Survey, while being ranked in the top 5 companies for the past 6 years.

We invite all newcomers to find out why people use Kycon connectors to enhance their products.

It's not just quality...it's Kycon quality!



"Celebrating 20 Years of Success"

D-Subminiature Connectors

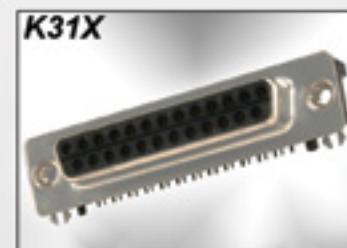
Series	K202XHT	K22X KF22X	K31X	K42X KF42X	K61X	K66X KF66X	K85X KF85X	K85R1X K85R2X	K86X KF86X	K88X KF88X	K96X KF96X	K99X
Right Angle	▶	▶	▶	▶	▶	▶		▶				
Vertical							▶		▶	▶	▶	
SMT	▶											
Through Hole		▶	▶	▶	▶	▶	▶	▶	▶	▶	▶	
European Footprint								▶				
Solder Cup							▶		▶			
High Density	▶		▶	▶	▶	▶			▶		▶	
IDC												▶
Ferrite Filter (optional)		▶		▶		▶	▶		▶	▶	▶	
Stacked / Multi Port				▶								
PC99 (optional)		▶	▶	▶	▶	▶						
High Temp	▶	▶	▶	▶	▶	▶	▶		▶	▶		



K202XHT
Surface Mount
Right Angle



K22X
0.318" Footprint Right Angle
PCB Mount
(also w/ferrite)



K31X
0.071" Footprint Right Angle
PCB Mount



K42X
Stacked Right Angle
PCB Mount
(also w/ferrite)



K61X
0.20" Footprint High Density
Right Angle PCB Mount



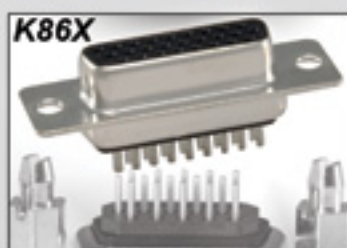
K66X
0.350" Footprint High Density
Right Angle PCB Mount
(also w/ferrite)



K85X
Vertical PCB Mount and
Soldercup Low Profile
(also w/ferrite)



K85R1X
Open Body PCB Mount
Right Angle



K86X
Vertical PCB Mount and
Soldercup/High Density
(also w/ferrite)



K88X
Vertical PCB Mount
High Profile
(also w/ferrite)



K96X
Vertical PCB Mount
High Density/High Profile
(also w/ferrite)



K99X
IDC

USB/IEEE 1394

Series	KUSBLX	KUSBVX	*KUSBEX / KUSBX	KUSBX-SL	KFWSX	KMAX	*KMBEX / KMBX	KMABX	KMMX
Through Hole	▶	▶	▶	▶	▶		▶		
SMT	▶		▶		▶	▶	▶	▶	▶
Right Angle Type	▶		▶		▶	▶	▶	▶	▶
Vertical Type		▶			▶		▶		
Right Angle Upright				▶					
Receptacle	▶	▶	▶	▶	▶	▶	▶	▶	▶
Plug			▶			▶	▶		
A Type	▶	▶	▶	▶		▶			
B Type		▶	▶				▶		▶
AB Type								▶	▶
Stacked Option	▶	▶	▶						
Mini						▶	▶	▶	
Micro									▶
High Temp (Optional)	▶		▶		▶	▶	▶	▶	▶
High Retention Force			▶						



Mini AB-Type Surface Mount



Mini A-Type Surface Mount



Mini B-Type Surface Mount



Micro AB&B Type Surface Mount



Vertical PCB Mount A & B Type



SMT & PCB Mount A&B Type



Contact Kycon for available options



Surface Mount A-Type Plug



A-Type Receptacle Slim Upright Right Angle



Low Profile Single and Stacked A-Type PCB Right Angle



SMT & PCB Mount IEEE 1394



RJ45 over Stacked

* Suggested part number series for new designs

Modular Jacks and Plugs

Series	GDCX-P	GDLX	GDTX	GDX-A	GLX	GMX	GSGX	GSX	GTVX	GWLGX	GWLX
Positions	4, 6, 8	6, 8	8	4, 6, 8	4, 6, 8, 10	4, 6, 8, 10	8	8	4, 6, 8	8	8
Contacts	4, 6, 8	4, 6, 8	8	2, 4, 6, 8	2, 4, 6, 8, 10	2, 4, 6, 8, 10	8	8	4, 6, 8	8	8
Through Hole	▶	▶	▶	▶	▶	▶	▶	▶		▶	▶
SMT		▶				▶			▶		▶
Shielded	▶	▶	▶		▶	▶	▶	▶		▶	▶
Ganged Option							▶			▶	
Right Angle		▶		▶	▶	▶	▶	▶		▶	▶
Vertical	▶		▶						▶		
High Temp (Optional)		▶	▶			▶	▶	▶	▶	▶	▶
Panel Stops	▶	▶		▶	▶						
No Panel Stops	▶	▶	▶		▶	▶	▶	▶	▶	▶	▶
Keyed	▶	▶		▶		▶					
LEDs										▶	▶



GDLX
.492" Height PCB Mount
Right Angle



GDX-A
.595" Height PCB Mount
Right Angle



GLX
.570" Height PCB Mount
Right Angle



GSX
Cat 5 Single PCB Mount
Right Angle



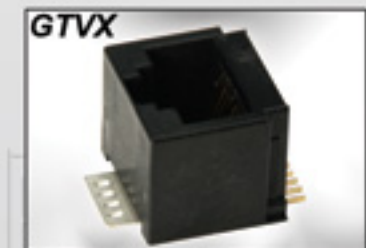
GMX
.45" Height PCB Mount
Right Angle



GDCX-P
Vertical PCB Mount



GDTX
Cat 5 Vertical Fully Shielded



GTVX
Vertical Surface Mount



GSGX
Cat 5 Ganged PCB Mount Right Angle



GWLX
.531" Height PCB Mount
Right Angle with LEDs



GWLGX
Ganged .531" Height PCB Mount
Right Angle with LEDs

Opticals



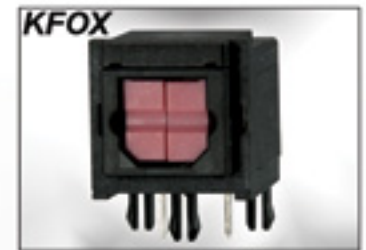
Stacked w/Mini-Din



Stacked w/Audio



Stacked w/RCA



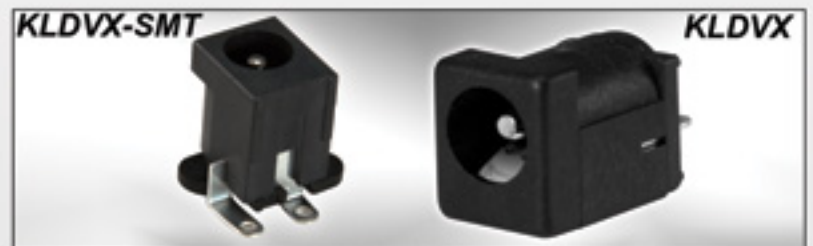
Low Profile

DC Power

Series	KLDLX	KLDPX	KLDVX	KLDX	KPJX	KPPX
Contacts					3-4	3-4
Through Hole	▶		▶	▶	▶	
SMT			▶	▶		
Panel Mount		▶			▶	
Vertical Mount			▶			
Cable Mount					▶	▶
Right Angle	▶			▶	▶	
High Temp			▶	▶	▶	
2mm & 2.5mm Inner Pin DIA		▶	▶	▶		
1mm & 1.3mm Inner Pin DIA	▶			▶		
Snap and Lock Option					▶	▶
Plug						▶
Shielded					▶	
Crimped (optional)	▶			▶		
LEDs	▶					



Snap and Lock Through Hole/Panel Mount



2.0/2.5mm Vertical SMT/Through Hole



Right Angle Through Hole and SMT



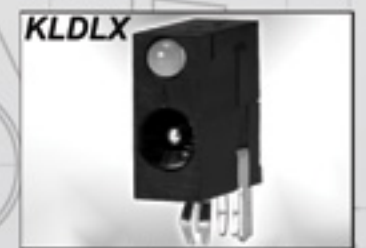
Snap and Lock Cable Mount Plug



Snap and Lock Cable Mount Jack



1.0mm/1.3mm Surface Mount



1.3mm Mini Jack w/LED



2.0mm/2.5mm Panel Mount

Ø1.7 KLDX-SMT-0202-AP and -BP only (Optional)

3.5mm Audio Jacks

Series	STX-3000	STX-3081	STX-3100	STX-3120	STX-314	STX-315	STX-3200	STX-3500	STX-3501	STX-3900	STX-4235 (stacked)	STPX-3501	STX-35331	STX-35332	STX-3680	STX-3790	STX-35382
Positions	3,5	3,5	3,5, 8,11	3,5	3,5	3,5	3,5	3,4,5	3,4	3	3/3, 3/5, 3/9, 3/11	3	4	3,4,5	5,6	5	4
Right Angle	▶	▶	▶	▶	▶	▶	▶	▶	▶	▶	▶	▶	▶	▶			▶
Vertical															▶	▶	
Through Hole	▶	▶	▶	▶	▶	▶	▶		▶	▶	▶				▶	▶	
SMT								▶					▶	▶			▶
Panel Mount		▶			▶	▶				▶		▶					
All Plastic	▶			▶				▶	▶		▶				▶	▶	
Threaded Option		▶	▶		▶	▶	▶			▶		▶			▶		
Non-Threaded	▶	▶	▶		▶	▶	▶	▶	▶	▶	▶	▶			▶		
Mono (optional)		▶		▶	▶	▶	▶					▶		▶			
PC99 (optional)			▶	▶	▶	▶	▶	▶	▶		▶			▶	▶	▶	▶
Backplate (optional)			▶				▶								▶		
High Temp (optional)			▶	▶				▶	▶					▶	▶		



STX-3000
3.5mm PCB Mount
All Plastic



STX-3081
3.5mm PCB Mount
Low Profile



STX-3100
3.5mm PCB Mount



STX-3120
3.5mm PCB Mount
All Plastic



STX-314
3.5mm PCB Mount
Slim Design Crimped Leads



STX-315
3.5mm PCB Mount
Slim Design Straight Leads



STX-3200
3.5mm PCB Mount



STX-3500
3.5mm Surface Mount



STX-3501
3.5mm PCB Mount



STPX-3501
3.5mm Panel Mount



STX-3900
3.5mm PCB Mount



STX-4235
3.5mm Stacked PCB Mount



STX-3680
3.5mm Vertical Mount

Upper jack

Lower jack



3.5mm Audio Jacks (Continued)

STX-3790



3.5mm Vertical Mount

STX-35331



3.5mm Surface Mount

STX-35332



3.5mm Surface Mount

STX-35382



3.5mm Surface Mount

2.5mm Audio Jacks

Series	STX-2000	STX-2500	STX-2550	STX-25427	STX-25443	STX-25406	STX-25441	STX-0402	STX-2503	STX-2513
Positions	3	3	3,4,5	6	7	4,5	6	4	3,4	4
Right Angle	▶	▶	▶	▶	▶	▶	▶	▶	▶	▶
Through Hole	▶							▶		
SMT		▶	▶	▶	▶	▶	▶		▶	▶
All Plastic					▶		▶			
High Temp (optional)		▶	▶	▶	▶	▶	▶	▶	▶	▶

STX-2000



2.5mm PCB Mount

STX-2500



2.5mm Surface Mount

STX-2550



2.5mm Surface Mount

STX-25427



2.5mm Surface Mount

STX-25443



2.5mm Surface Mount

STX-25406



2.5mm Surface Mount

STX-25441



2.5mm Surface Mount

STX-0402



2.5mm Low Profile Through Hole

STX-2503



2.5mm Surface Mount

STX-2513

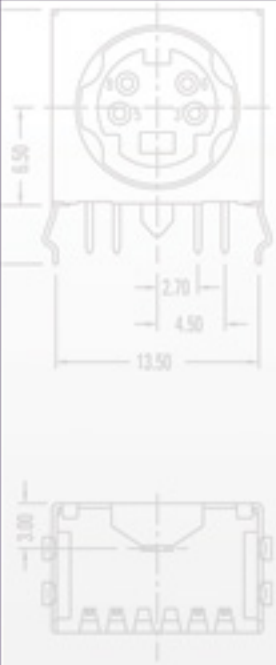


2.5mm Surface Mount

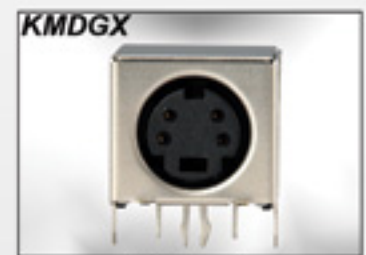
Upper jack

Lower jack

Mini-Dins



Series	KMDGX	KMDLX	KMDTX	KMDRX	KMDVLX	KMDPLX	KMDLAX	KCDX
Contacts	3-10	3-8	4, 6	4, 6, 7, 9	3, 4, 5 6, 8	3, 4, 5 6, 8	3-8	3-8
Plug							▶	
Socket	▶	▶	▶	▶	▶	▶		▶
Shielded	▶	▶	▶	▶				▶
Non-Shielded	▶	▶			▶	▶	▶	▶
Right Angle	▶	▶	▶	▶				▶
Vertical					▶			
Panel Mount						▶		
SMT			▶					
Through Hole	▶	▶	▶	▶	▶			▶
Stacked	▶							
Cable Mount							▶	
High Temp (optional)	▶		▶		▶			▶
PC99 (optional)	▶						▶	
Snap & Lock Option		▶			▶	▶	▶	



Right Angle



Stacked Right Angle
Snap & Lock



Cable Mount Plug - Snap & Lock



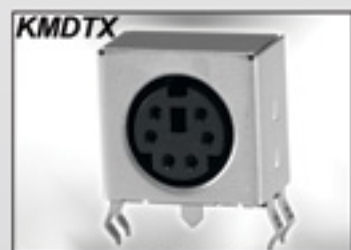
Right Angle Snap & Lock



Panel Mount, Snap & Lock



Low Profile Right Angle



Slim Design

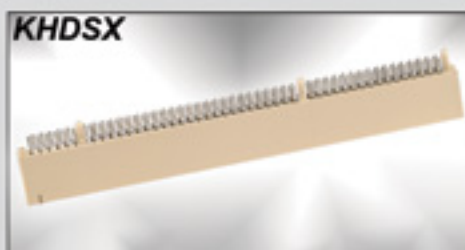


Vertical Mount, Snap & Lock



Right Angle Circular Din

Card Edge



PCI - High Density
Through Hole Mount



PCI Express® Through Hole Mount



PCI Express® Straddle Mount

Cables



Right Angle



Phone Cables



Audio / Video



Harnesses



USB Cables



Adapters

Kycon can engineer and manufacture a wide variety of custom cable assemblies and adapters. Kycon specializes in custom over-molded cable assemblies, phone cables, small wire harnesses, and custom adapters. Kycon offers RoHS compliant cable assemblies with custom strain reliefs, overmolded ferrites, and customer logos. Generally, 1k mins will apply.



For all cable assembly requirements, please contact Kycon directly:
+1.408.494.0330, or products@kycon.com

Not just quality,
KYCON quality...



For more information, please contact us:

Website: WWW.KYCON.COM

Email: PRODUCTS@KYCON.COM

Phone: +1.408.494.0330

