

samtec
samtec
samtec
samtec
samtec
samtec
samtec
samtec
samtec
samtec
samtec

A tiger is shown in a dynamic, leaping pose, moving towards the viewer. The tiger's front paws are extended forward, and its hind legs are pushing off. The background is a soft, out-of-focus light blue and white. The overall image has a sense of motion and power.

COMPANY PROFILE

OCTOBER 2007

GLOBAL OPERATIONS AND SUPPORT

**4 x 25 Operations Model:
Redundant Manufacturing,
Optimized Labor Costs,
Delivery & Flexibility**

Broad Product Line

**Customized Global
Information Network
Enables 24-hour, Real-time
Responsiveness**

Industry Service Leader

**Global Quality and
Engineering Systems**

**ISO 14001, ISO 9001 and
TS 16949 Certified**

Samtec "Global Fusion"

One World • One Company • One Source – Samtec Global Fusion

Samtec's four worldwide facilities provide redundant manufacturing capabilities, optimized labor costs and deliveries, and the flexibility to quickly achieve additional capacity to support market demands.

Samtec's Global Information Network was developed in-house and designed around the company's business model. This completely customized system ensures 24-hour, real-time responsiveness any time, anywhere in the world, making Samtec the service leader in the connector industry.

4 x 25 Operations Model

- Manufacturing, plating and sourcing in both hemispheres
- Manufacturing locations in USA, Costa Rica, Malaysia and China
- Low cost, quick-turn and advanced development
- Global logistics, custom worldwide systems
- Global quality and engineering systems

Samtec Global Network

- Ensures complete synergy among Samtec's service, manufacturing and quality strategies
- Integrates all sales, support offices and manufacturing facilities worldwide, 24 hours a day, 7 days a week
- Empowers associates to provide real-time responsiveness and make decisions from anywhere in the world, at any time
- No interruption or delays due to location, time zone or language

Samtec Sudden Service®

- Sudden Service® ensures quick-turn deliveries, samples and information
- Online Information and Support
- In-house Engineering Department
- Signal Integrity Services
- Testing & Development
- Bishop Report's Customer Service Industry Leader
- ISO 14001, ISO 9001 and TS 16949 Certified
- In-house plating, coax cable and flex circuit manufacturing



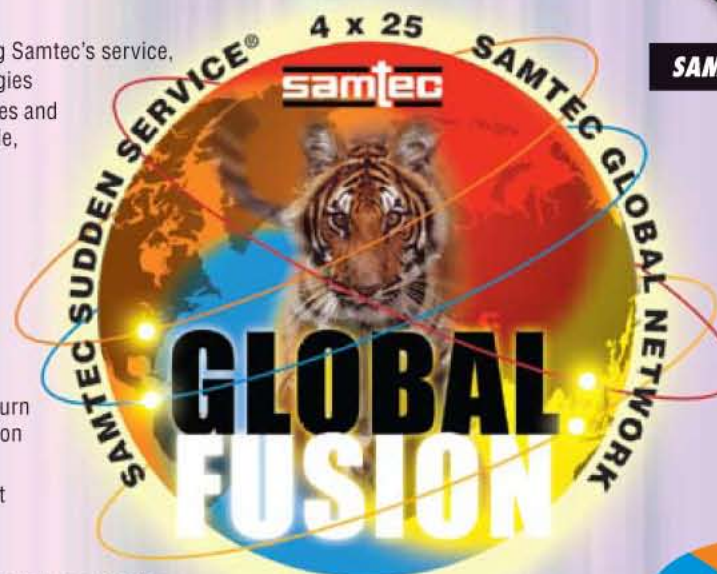
SAMTEC USA



SAMTEC NORTHWEST

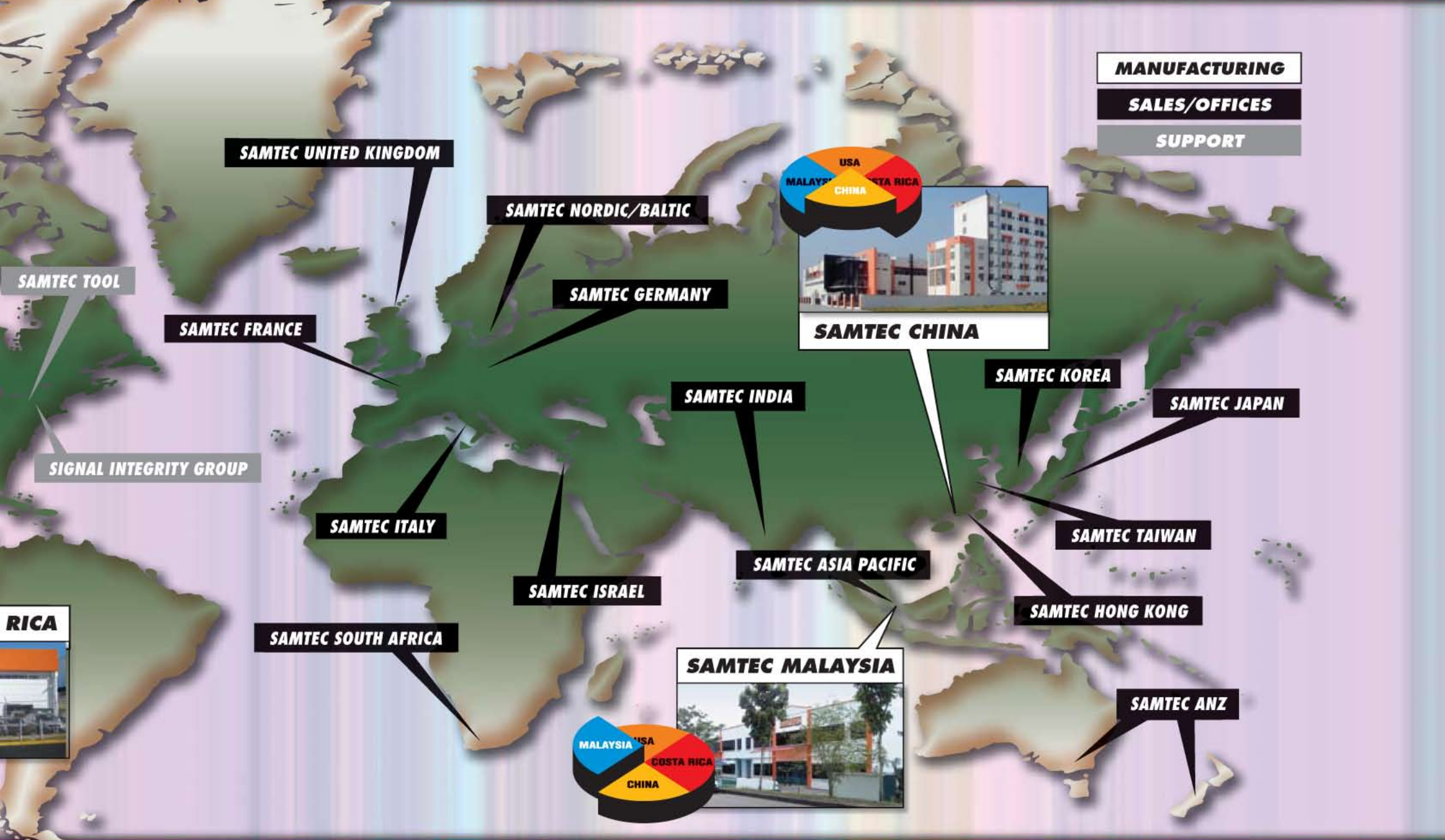
SAMTEC CABLE

SAMTEC SILICON VALLEY



SAMTEC COSTA





SUDDEN SERVICE®

Service Leadership:
Samples, Lead-times,
Quotes and Information

Broad Line of Interconnect
Products and Services

Global Information System
Enables 24-hour, Real-time
Responsiveness

Global Logistics
and Support

In-house
Engineering Support

#1 Connector Industry Website



SUDDEN SERVICE



Broad product line

Full Line Interconnect Solutions

Samtec's broad product line offers interconnect solutions for every application:

- Signal Integrity Systems
- Micro Interconnects
- Rugged & Power Systems
- Board-to-Board Applications
- Cable Assemblies
- Panel & I/O Systems
- Engineering Services & Support



Global Information Network



Global Information Network

Samtec's proprietary computer system was developed in-house and written around the company's business model:

- Sales, support and manufacturing facilities are fully integrated
- Enables associates real-time decision-making capabilities
- 24-hour, real-time response and action
- Full EDI capability
- Global Signal Integrity support services



Sudden Samples ship in 24 hours,
standard lead times of 1-3 days

Service Leadership

Samtec has been ranked #1 in Customer Service by the Bishop Report's annual "Survey of the Electronic Connector Industry" for over a decade.

- Sudden Samples ship in 24 hours
- 24-hour quote turnaround
- Standard lead times of 1-3 days
- Delivery to Europe and Asia Pacific within 2-3 days
- Inventory management systems
- Flexible pricing programs



SIGNAL INTEGRITY DIVISION



In-house engineering support

Engineering Services & Support

A full in-house engineering department offers person-to-person EE assistance.

- Services tailored to specific customer, product and application needs
- Signal Integrity Division provides services and support for selection, development, simulation and testing of high speed systems
- Interconnect Processing Group for assistance with processing and manufacturing issues



#1 connector industry website

Sudden Information

www.samtec.com

- Rated #1 connector industry website by Bishop & Associates Customer Survey
- Product searches and specifications
- High Speed Cable & RF Cable Builders
- Footprints, 3-D models and catalog pages
- On-request test data
- Complete test and modeling data
- Electrical testing and mechanical data
- SPICE and IBIS ICM 1.0 models
- White Papers, Application Notes
- Final Inch® Break Out Region PCB Design Tools

INTERCONNECT CAPABILITIES



SIGNAL INTEGRITY

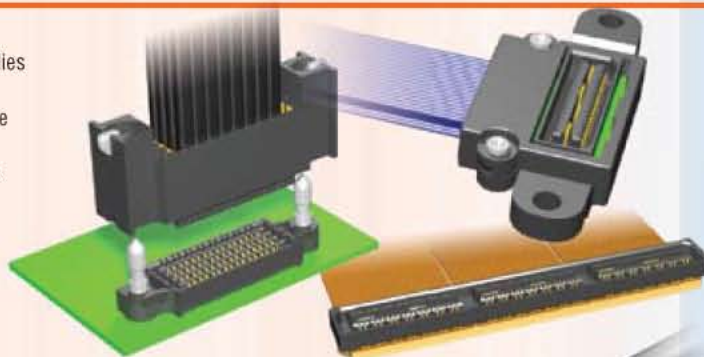
BOARD-TO-BOARD

- High Speed Connectors
- High Density Arrays
- Shielded & Rugged Systems
- Horizontal and Perpendicular Interfaces
- Elevated Riser Cards and Connectors
- Mixed Technology Footprint



CABLE

- Data Rate Cable Assemblies
- RF Connectors & Cables
- Custom High Speed Cable
- High Speed Flex
- Design/Build Capabilities



PANEL & I/O

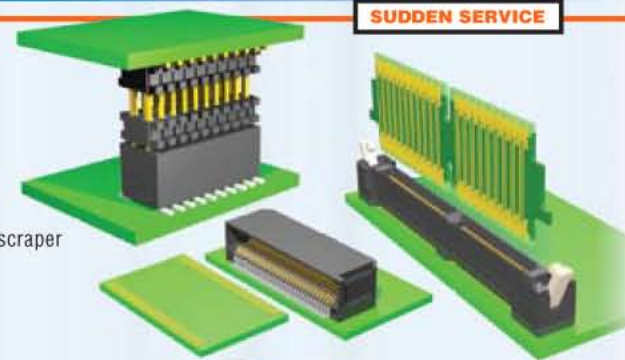
- High Speed I/O Cable Plugs and Receptacles
- DataBank™ High Density Cable Plugs and Receptacles



MICRO

BOARD-TO-BOARD

- Flexible Stacking
- Micro Blade & Beam
- One Piece Interfaces
- Micro Pin & Socket
- Standard & Low Profile Headers and Sockets
- High Density, Shrouded & Skyscraper
- High Speed Micro Card & Edge Card Systems



SUDDEN SERVICE

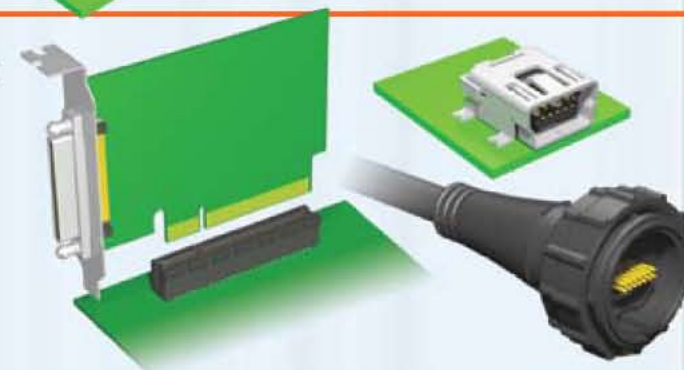
CABLE

- Discrete Wire Systems
- IDC Ribbon Cable Assemblies
- Flex Circuits
- RF Cable Systems
- Data Rate Cable Assemblies



PANEL & I/O

- AccliMate™ IP68 Sealed Circular Cable Plugs and Receptacles
- RF Cable Plugs and Receptacles
- Standard I/O Cable Plugs and Receptacles
- Micro Card Interfaces



RUGGED/POWER

BOARD-TO-BOARD

- Power Sockets & Terminals
- Power/Signal combinations
- One Piece Interfaces
- Hermaphroditic Systems
- High Speed Board-to-Board
- High Reliability Tiger Eye™ Contacts



CABLE

- Discrete Wire Systems
- Data Rate Cable Assemblies
- RF Cable Systems
- IDC Ribbon Cable Assemblies
- High Speed I/O Cable Systems



PANEL & I/O

- Acclimate™ IP68 Sealed Circular Cable Plugs and Receptacles
- High Speed I/O Cable Plugs and Receptacles
- RF Cable Plugs and Receptacles
- Specialty Mod Jacks
- Standard I/O Cable Plugs and Receptacles



APPLICATION SPECIFIC

SIGNAL INTEGRITY

- Custom coax, RF, Microwave and Flex cables
- Custom differential pair configurations
- Ferrite shielding
- Elevated stack heights
- Test probes
- LGA Interfaces



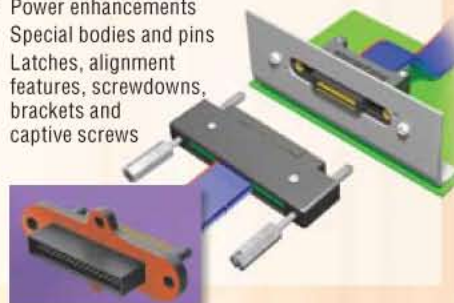
MICRO

- Pin modifications
- Body modifications
- One Piece interfaces
- Custom Flex and IDC



RUGGED/POWER

- Automotive interconnects
- Power enhancements
- Special bodies and pins
- Latches, alignment features, screwdowns, brackets and captive screws



Signal Integrity Services

- Application Specific services for design, modeling and testing of full systems or subsystems
- Services tailored to specific needs and products
- Extensive modeling, simulation and testing capabilities including de-embedding services



Platings, Coax Cables & Flex Circuits

- In-house plating facilities
- In-house coax cable manufacturing
- In-house Flex Circuit manufacturing



Testing & Development

- SMT lab for processing studies
- Stereolithography for mechanical studies
- Quick-turn prototype capabilities
- In-house mold design and fabrication
- Quick change tooling for every modification



SIGNAL INTEGRITY SERVICES

Online Services, Support
and Reference for
High Speed Systems

In-house EE Support

Extensive Design,
Modeling and
Testing Capabilities

Break Out Region (BOR)
PCB Design Tools

Services Tailored to
Specific Needs & Products

On-Request Test Data



Signal Integrity Center provides
online support

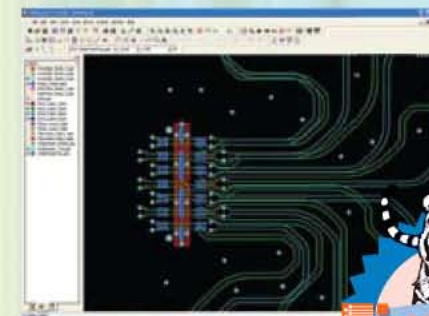


Signal Integrity testing

**SIGNAL
INTEGRITY
DIVISION**

Signal Integrity Group

- EE customer interface via in-house staff
- Services for design, modeling and testing of full systems and subsystems
- Samtec involvement available at various levels
- Services tailored to specific needs and products
- Extensive modeling, simulation and testing capabilities



Final Inch® Break Out Region
(BOR) PCB design tools



Signal Integrity Center

- User friendly website
- High speed connector simulations, models, reports, drawings and searches
- SPICE, IBIS models
- Online PADS/ORCAD libraries and support
- High Speed Characterization reports
- Time and frequency domain test data
- Bandwidth Performance Selector and Interactive Cable Builders
- Application Notes: reference designs that verify performance to industry standards

Final Inch® PCB Design Tools

- Break Out Region (BOR) PCB designs that save design, development and validation time and resources and predict real-world performance expectations in real-world Signal Integrity applications
- Downloadable art files and HSPICE simulations
- Test and evaluation kits
- Empirical Signal Integrity data
- On-Request test data

SUDDEN INFORMATION



Online Models,
Test Reports, Data
and Product Reference

Interactive Cable Builders

24-hour, Real-time
Customer Service Interface

Online Signal Integrity Tools
and Reference

Online Quote and
Sample Requests

Over 20 Product Searches
and Locaters



Specs and Test Reports

Product Specs & Test Reports

- Engineering prints
- PCB footprints
- PDF catalog pages
- Models for simulation (SPICE and IBIS)
- PADS and ORCAD libraries
- Application Notes
- High Speed characterizations
- Lead coplanarity specifications

Product Searches

- By keyword
- By part number
- By picture
- By word description
- By series
- By board stacking
- By cross reference
- Text search

Online Cable Builders

- High Speed, RF and RF/Combo Builders
- Automatically validate part numbers
- Order samples online
- Sudden Samples ship within 24 hours via express service

Personal Call Back

- Immediate reply from a Samtec Customer Service Representative or the Signal Integrity Group
- Phone or private one-on-one chat
- Choose from one of Samtec's worldwide service facilities



Online quotes and ordering



www.samtec.com



Search by Picture



Interactive cable builder



Service Center

www.samtec.com?logon=psc

- Customer specific information
- Real-time 24 hours/7 days
- Quotes and ordering online
- Delivery status and expediting
- Shipment tracking
- "Personal Call Back" program available

Signal Integrity Tools

- Bandwidth Performance Selector
- High Speed Connector Selector
- Final Inch® Break Out Region design tools for ease of PCB manufacture and optimized high speed performance
- Cable Performance Calculator
- High Speed Cable "Build-a-Part-Number" Program
- White Papers and Application Notes

QUALITY AND MANUFACTURING

ISO 14001, ISO 9001
and TS 16949 Certified

In-house Plating,
Coax Cable and Flex Circuit
Design and Manufacturing

Extensive Testing and
Development Capabilities

State-of-the-Art
Manufacturing Facilities

Quick-turn Prototype
Manufacturing Capabilities



In-house coax cable division



Worldwide manufacturing capabilities

In-house flex circuit manufacturing



In-house plating facilities

Quality Certifications

- Samtec USA is ISO 14001, ISO 9001 and TS 16949 certified
- Samtec Singapore is TS 16949 certified
- Samtec Malaysia is ISO 9001 and TS 16949 certified
- Samtec China is ISO 9001 and TS 16949 certified



Special Capabilities

- In-house plating facilities for custom metals, thicknesses and selective platings
- In-house coax cable manufacturing for custom gauges, constructions and performance specifications
- In-house flex circuit manufacturing for custom designs and high speed specifications



Custom flex design and analysis

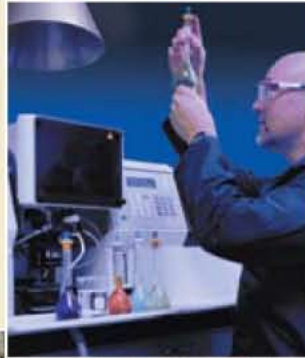


Quick-turn prototype manufacturing

Testing & Development

- Stereolithography prototype capability for mechanical studies
- Quick-turn manufacturing prototype capability
- In-house wire EDM capability for pin prototypes
- Connector processing lab
- Mechanical and electrical testing labs

Quality control and testing



State-of-the-art manufacturing facilities

Standard Capabilities

- Vertically integrated for lower cost and greater flexibility
- Automated design and fabrication
- In-house mold and assembly tooling design and fabrication
- Vision inspection
- Tape and Reel molding and fabrication
- Majority of products are compliant with EU WEEE and RoHS Directives



Automated Pick & Place Tray & Reel manufacturing



Automated manufacturing



SAMTEC USA

P.O. Box 1147 • New Albany, IN 47151-1147 USA
1-800-SAMTEC-9 (USA & Canada) • Tel: 812-944-6733 • Fax: 812-948-5047 • E-mail: info@samtec.com

SAMTEC SILICON VALLEY

985 University Avenue • Suite 38 • Los Gatos, CA 95032-7636
Tel: 408-395-5900 • Fax: 408-395-1520 • E-mail: samtecsiliconvalley@samtec.com

SAMTEC UNITED KINGDOM

117 Deerdykes View • Westfield, Cumbernauld • Scotland G68 9HN
Tel: 01236 739292 • Fax: 01236 727113 • E-mail: scotland@samtec.com

SAMTEC GERMANY

Streiflacher Str. 7 • 82110 Germering • Germany • 0800-SAMTEC9 (0800 / 72 68 329) Germany only
Tel: +49 (0) 89 / 89460-0 • Fax: +49 (0) 89 / 89460-299 • E-mail: germany@samtec.com

SAMTEC FRANCE

2, Allée Emile Cohl • BUROPARC TORCY • 77200 TORCY • France
Tél: 01 60 95 06 60 • Fax: 01 60 95 06 61 • E-mail: france@samtec.com

SAMTEC ITALY

Via Colleoni 25 • Centro Direzionale Colleoni • Palazzo Pegaso Ingresso 3 • 20041 Agrate Brianza-Milano • Italy
Tel: 39 039 6890337 • Fax: 39 039 6890315 • E-mail: italy@samtec.com

SAMTEC NORDIC/BALTIC

Solkraftsvägen 25 • 13570 Stockholm • Sweden
Tel: +46-8-4477280 • Fax: +46-8-7420413 • E-mail: scandinavia@samtec.com

SAMTEC ISRAEL

7 Jabutinsky St. • Moshe Aviv Tower • Ramat Gan, Israel 52520
Tel: 972-3-7526600 • Fax: 972-3-7526690 • E-mail: israel@samtec.com

SAMTEC INDIA

#26/2, 1st Floor, Bugle Rock Road • Basavanagudi • Bangalore - 560 004 INDIA
Tel: 91 80 3272 1612 • Fax: 91 80 4152 8187 • E-mail: india@samtec.com

SAMTEC ASIA PACIFIC

1 Kallang Sector #05-01/02 • Kolam Ayer Industrial Park • Singapore 349276
Tel: 65 6745-5955 • Fax: 65 6841-1502 • E-mail: singapore@samtec.com

SAMTEC JAPAN

Mitsui Seimei Bldg. 7F • 3-7-3, Shinyokohama, Kohoku-ku • Yokohama-shi, Kanagawa 222-0033 Japan
Tel: 045-475-1385 • Fax: 045-475-1340 • E-mail: japan@samtec.com

SAMTEC CHINA

Room 1701, Building C, Technology Mansion • No 900 Yishan Road • Shanghai, China 200233
Tel: 86-21 61103766 • Fax: 86-21 53854047 • E-mail: china@samtec.com

SAMTEC TAIWAN

10F.-1, No. 180, Sec. 2 • Dunhua S. Rd. • Da-an District • Taipei City 10669 • Taiwan (R.O.C.)
Tel: 886-2-2735-6109 • Fax: 886-2-2735-5036 • E-mail: taiwan@samtec.com

SAMTEC HONG KONG

Room 18, 13/F, Shatin Galleria • 18-24 Shan Mei Street • Fo Tan, Shatin, Hong Kong
Tel: 0755-83776780 • Fax: 0755-83776767 • E-mail: hongkong@samtec.com

SAMTEC KOREA

RM 1067, Trapalace B/D • 10-1 Soonae-Dong, Bundang-Gu • Seongnam-Si, Kyunggi-Do • 463-825 Korea
Tel: 82-31-717-5685 • Fax: 82-31-717-5681 • E-mail: korea@samtec.com

SAMTEC ANZ

5 Berrigan Court Oakleigh South • Victoria 3167, Australia
Tel: 613 9512 7747 • Fax: 613 9512 7745 • E-mail: australia@samtec.com

SAMTEC SOUTH AFRICA

49 Van Riebeeck Avenue • 11 De Molen Road • 1610 Edenvale, South Africa
Tel: 27 11 454 4317 • Fax: 27 86 6714432 • E-mail: africa@samtec.com

SAMTEC ON-LINE

Internet: www.samtec.com